

WiseScan WiseScan

21

www.csoft.com

Scan-to-File, Scan-to-Print and Scan-to-View scanning modes

Direct support of wide format scanners and Virtual Scanner feature

Client-server Scan-to-Net

Load/View/Save images of wide spread of industrial file formats

Efficient very large (over 2Gb) image processing

Extensive multipage files support

Printing with closed loop calibration and ICC profiles

Extensive set of image enhancement tools and batch processing

Raster editor and manual image retouch

Are you overloaded with scanning, image processing and printing? You need WiseScan. One solution for many problems, one tool that can do it all!

WiseScan is the unique solution for scanning and image processing of wide format drawings. It performs efficiently the typical workflow of a copy shop or a scanning bureau. WiseScan offers convenient batch processing of images (including wide format high resolution true color images), Scan-to-File fast scanning mode, Scan-to-Print copy mode, distributed image processing and printing via Scan-to-Net and many other outstanding features.

Scan-to-File - efficient direct scanning

WiseScan supports direct scanning from wide format scanners and TWAIN scanner interface. The fastest scanning mode of WiseScan is called 'Scan-to-File'. It writes an image from the scanner directly to the hard disk. The speed is only limited by the scanner. Full control of the scanner functionality allows the professional user to achieve the most efficient and timesaving scanning workflow. WiseScan was designed to work with modern wide format color scanners made by Contex, ActionImaging, Graphtek and others. It supports full color high resolution scans as well as black and white and grayscale ones.

Scan-to-Print including color calibration

Scan-to-Print copies an image from scanner to printer spooler by stripes. Printing starts immediately after the last stripe is scanned. A copy of a wide format document - map, full color poster or 3D CAD rendering can be printed in seconds. WiseScan incorporates different modes of color calibration including usage of ICC profiles from both scanner and plotter as well as individual closed loop calibration of the scanner-plotter pair. WiseScan prints with advanced nesting functionality saving media for small format image output

CSoft
Consistent Software

Scan-to-View - image processing and editing

WiseScan delivers a wide choice of processing tools for mono-chrome and color images. It is possible to crop color and grayscale raster images, change their resolution and scale, deskew them, and eliminate image deformations using the simple 4-point correction feature. Users can easily manage the colors of the image and create/edit LUT files in the Color Classifier or manipulate blueprints (scanned in grayscale mode) with full control using the Adaptive Binarization.

Of course, the user can change brightness, contrast, hue and saturation, adjust the color gamut of an image using a histogram, improve image quality and apply a set of color filters. Image processing tools can be applied one-by-one in the interactive mode or in the Script Studio can be combined sequential batch sequence to process a set of images. Also, WiseScan has a set of drawing tools enabling the user to draw lines, arcs, circles and even type a text over the image.

Scan-to-Net - client-server document scanning

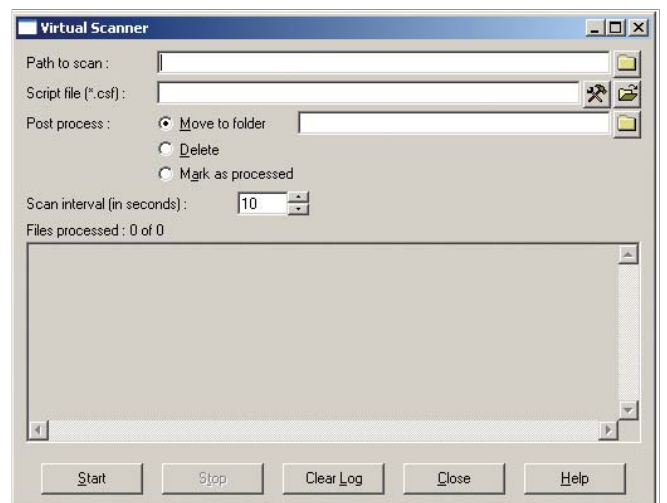
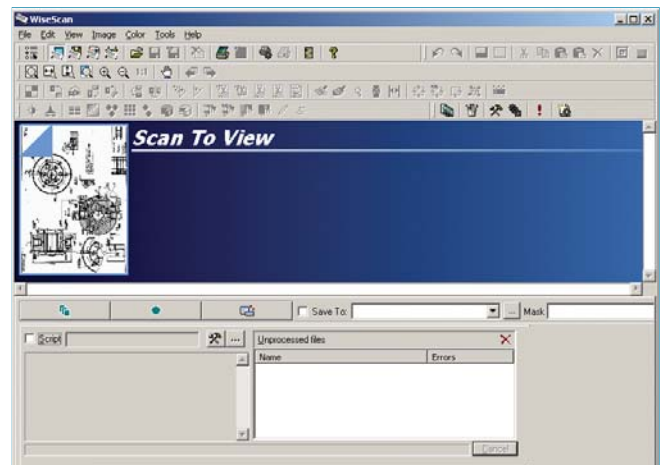
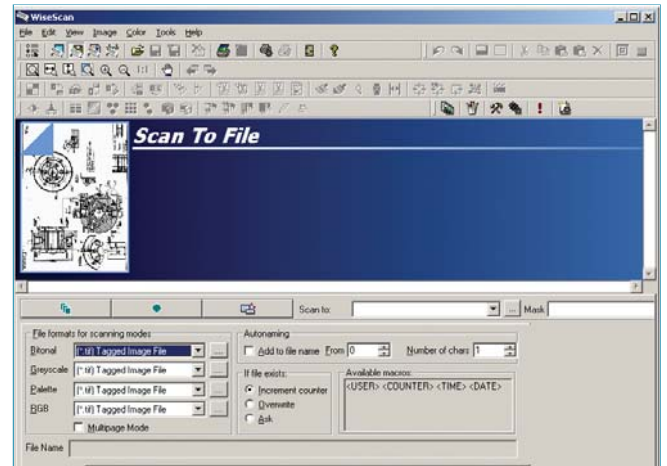
The Scan-to-Net feature enables you to send scans directly to specific computers enabled for receipt of image data. This powerful feature lets you distribute and save images directly through your network/Internet. The "scanner server" is any computer in a network from which WiseScan communicates with any number of clients that receive image files. Clients can be equipped with WiseScan working in batch mode to immediately process received files. Scan-to-Net technology allows the efficient sharing of scanning and image processing resources and provides a convenient and cost saving workflow.

Batch-processing with visual creation of batch

The most powerful feature of the WiseScan is its batch mode operation. It allows increasing productivity of all steps within the scanning/image processing/printing workflow. In the Script Studio users create sets of commands visually using drag'n'drop. All commands can be fine-tuned and the result can be saved as a script file for future use. Scripts can be applied to any sets of image files including all files in a selected folder or folder trees. It is also possible to scan in batch mode. A report of the batch process can be saved in a log file. WiseScan delivers much functionality and every professional user can increase efficiency and the quality of a job by using WiseScan.

Fill your archive with drawings

WiseScan can help you to populate your archive with scanned drawings. Combine direct scanning driver capabilities with batch image processing tools and get the perfect solution to convert an old paper drawing archive to digital one. You can store all image processing parameters and recall them when you need them. Thus consistent quality images can be achieved. Also you can "outsource" further scanning to operator with less qualification and be sure that results will be the same.



Your local partner is:

CSoft
Consistent Software

Consistent Software (International) a.s.
Storgt. 18,
N-2000 Lillestrom, Norway
Phone: +47 6484 7110
Fax: +47 6484 7111
E-mail: sales@csoft.com
Internet: www.csoft.com