



www.csoft.com

WiselImage 12 for AutoCAD

WiselImage®

- AutoCAD 2012 32- and 64-bit compatible
- CAD-style raster processing with Ribbon User Interface
- Ultimate image enhancement tools
- Automatic and semi-automatic R2V conversion
- FineReader OCR in each Pro version
- Built-in Scanning module

What is WiselImage for AutoCAD?

WiselImage for AutoCAD solves the problem of incorporating scanned raster data into a CAD environment. It is an AutoCAD application for raster editing, raster-to-vector conversion and drawing revision. WiselImage enables you to make quick changes, do editing and correction or automatic and semi-automatic raster-to-vector conversion of scanned technical drawings, maps, plans, drafts, sketches and other graphics. It blends raster and vector with CAD functionality and image processing capabilities perfectly -everything in one single cost-effective application.

Who needs WiselImage?

WiselImage for AutoCAD is the solution for everybody who focuses not only on new designs but also on restoration, updating and drawing revisions. For you, WiselImage will be a life-saver. This makes WiselImage a must-have add-on for a wide range of applications - GIS, cadastral, aerial and satellite image processing, architecture, engineering and schematics to mention but a few.

WiselImage features

All WiselImage commands are perfectly integrated into the AutoCAD environment as if just more CAD tools. AutoCAD's CAD functionality combined with WiselImage's high-end image processing, results in a strong synergetic effect! AutoCAD now is capable of processes scanned drawings, satellite imagery, or other raster files as the best image processing application. And the crossroad of raster and vector graphics is the WiselImage capabilities to work with raster and vectors together as if it is a single entity set. Raster-to-vector conversion and map digitizing has never been easier.

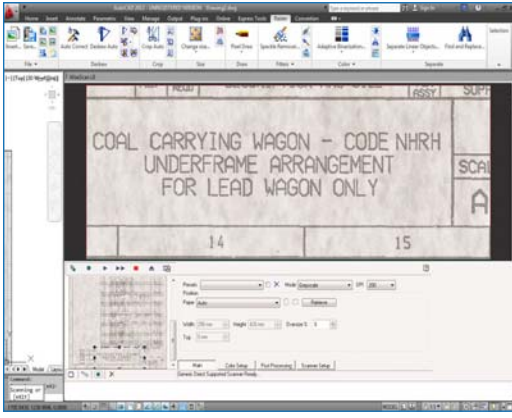
What are WiselImage's benefits?

WiselImage provides the most advanced solution for raster, vector and raster-to-vector conversion of raster images. With the powerful suite of tools in WiselImage you can edit scanned drawings and maps easily. WiselImage allows you to save redrafting time and boost your productivity. The time from customer request until invoicing can be dramatically shortened - all without having to reduce the quality or price of your work.

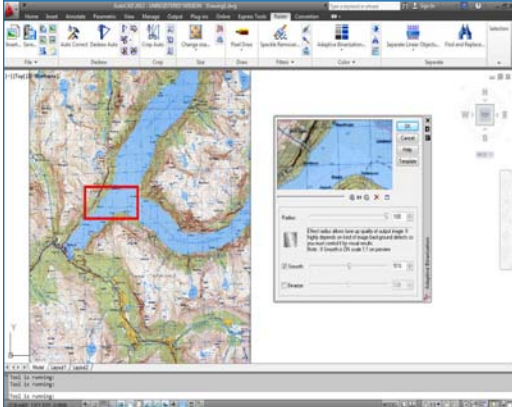
One step from scanner to CAD

Large format scanners produce high-quality black and white, greyscale, or colour raster images. To effectively transfer scanned drawings to CAD, efficient post-processing software is necessary; the ideal solution is WiselImage for AutoCAD with the built-in scanning module called WiseScan. It provides native support for most wide-format scanners with Image clean-up, correction, calibration, bit-depth reduction and raster-to-vector conversion.

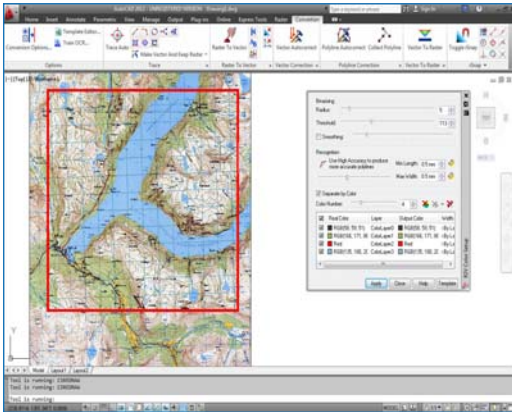




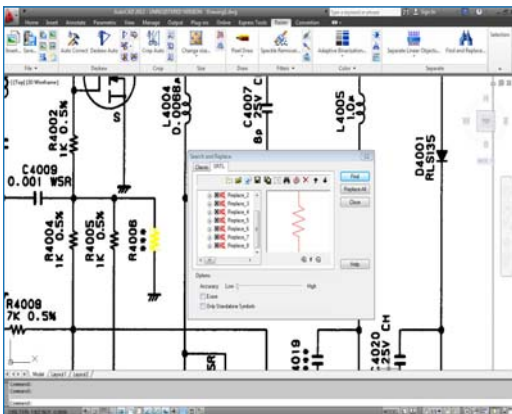
WiseScan



Adaptive Binarization



Colour raster-to-vector conversion



Search and Replace

High quality image processing with precision

Exact calibration is essential when processing scanned drawings. WiselImage offers multiple options for selecting the most suitable method, importing coordinate values or assigning point positions manually. High quality transformation algorithms provide very accurate results.

Full colour images are huge so it is vital to minimize image file sizes. WiselImage can do this without any loss of information. Coloured areas can be combined according to colour similarities or by referring to their distribution frequencies. With the help of this technology the number of colours in an image can be reduced from millions to tens. In WiselImage it is possible to crop, change resolution, scale, de-skew, and calibrate colour and greyscale raster images. It is possible to change brightness, contrast, hue and saturation and adjust the colour gamut, improve image quality and apply colour filters. Users can easily manage the colours of the image and create/edit LUT files. It is easy to edit, construct or add information onto these images, even rasterizing vectors to generate ISO compliant raster files as often required for compliancy purposes. Merging monochrome and colour images is also a one-click task.

Intelligent raster objects and tracing

WiselImage offers several advanced options for working with raster and vector data. One such option is the unique technology to select raster objects and separate them into layers. This feature is based on the intelligent selections and the smart WiseObject (text, hatches, and lines) selection.

WiselImage has an advanced tracing function (semi-automatic - interactive raster to vector conversion) also for colour, grey scale or monochrome images. In addition to easy detailed objects tracing in WiselImage, it is possible to trace raster shapes that correspond with vector templates. Select a raster shape and WiselImage will automatically match it to the appropriate vector object from a default Symbol Library or a customized library created to match user requirements. The polyline tracing feature includes auto-detection of tracing direction.

Automatic raster-to-vector conversion (Pro version)

When applying automatic vectorization, the user needs to set recognition parameters before starting the procedure. WiselImage for AutoCAD recognizes and converts to corresponding vector objects raster lines, arcs, circles, symbols, points, polylines, outlines, hatches and text. The program also recognizes raster line types, widths and dimension arrows. WiselImage for AutoCAD can process colour, grey scale or black and white images.

The results of automatic vectorization often require further correction - this can be done automatically with tools that will merge vector fragments, create orthogonal lines, and round objects widths to specified values. Resulting vector objects can be separated by weight, AutoCAD layers and colour.

During automatic raster-to-vector conversion WiselImage for AutoCAD converts raster texts to AutoCAD text entities. It is also possible to convert raster texts to polylines or outlines. Text recognition is provided by the world leading FineReader OCR Engine 9.0. You can also use external OCR modules.

Working with Symbols

WiselImage offers several advanced options for working with raster and vector data. One of them is the unique technology to select or separate raster objects into other layers, which is based on intelligent selections and a brand new selection engine including the smart WiseObject (text, hatches, lines) selection. This feature is complimentary to the well-known Symbol Search-and Replace feature of WiselImage.

Your local partner is:

CSoft



CSoft AS
Storgaten 26,
N-2000 Lillestrom, Norway
Phone: +47 6484 7110
E-mail: sales@csoft.com
Internet: www.csoft.com