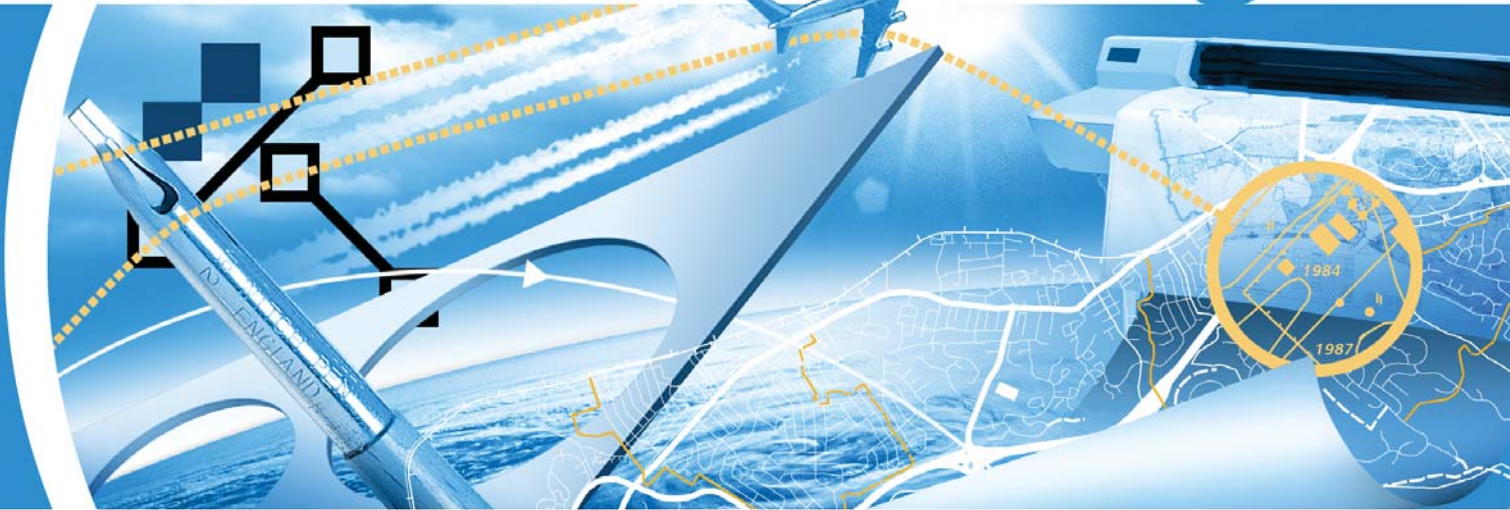


# WiselImage® WiselImage®



## WiselImage X for Windows

Where CAD meets image processing

No difference between raster and vector

Ultimate image and vector processing tools

Automatic R2V and V2R conversion

Intelligent raster selection and editing

Open Architecture

Direct scanner support

Batch processing

### WiselImage X for Windows – no more mystiques now

'X' means '10'. Ten is the beginning of a next decade. It is the next level. 'X' is a crossroad. It is the crossroad between raster and vector, productivity and precision, CAD and image processing.

WiselImage X includes all technology and research results from previous years and starting new era with real integration of CAD and image processing. It is a standalone raster-vector application with an open architecture.

WiselImage X streams the power of a raster-vector (raster images overlaid with vector elements) editor and raster to vector converter by a fantastic set of original processing tools and the ability to develop custom ones in scripting host. Multiple raster images can be loaded and the number of raster images handled simultaneously is unlimited. WiselImage allows user to edit, update, and convert (both semi-automatically and automatically) to vectors scanned maps, drawings, sketches, and other graphics. Native CAD-style interface with command line combined with high-end image processing tools results in synergetic effect, making WiselImage X the unique tool for wide range of applications – such as GIS, cadastral, aerial and satellite image processing, architecture, engineering, schematics to mention a few.

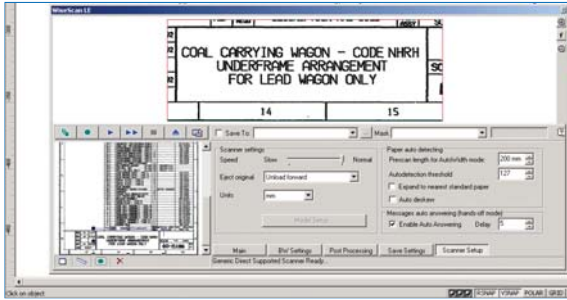
### What's new in version X?

- Profiles for switching and sharing WiselImage settings
- Full Screen mode to enlarge visible workspace
- Command line with embedded calculator for precision drafting
- Completely redesigned Scanning module with direct scanner support
- Symbol Recognition Template Library – a single source for symbol templates
- New Line Styles manager with support for complex and combined line types
- Text Styles for convenient text management and compatibility with CAD
- Custom User Attributes for all WiselImage objects
- Image Transparency options for all type of images
- Automatic Raster-to-Vector conversion for color and grayscale images
- Enhanced Polylines editing and a new Automatic Correction tool with a rich set of merging and combining options
- Search and Replace on color images with support of Symbol Recognition Template Libraries
- Adaptive Blur filter for blurring non-uniform color areas inside color transition boundaries in grayscale and color images
- Selective merging of raster images
- New vector and raster format support (DWF, JPEG2000)
- Improved export of GIS data (ESRI, MapInfo)

**CSoft**  
Consistent Software

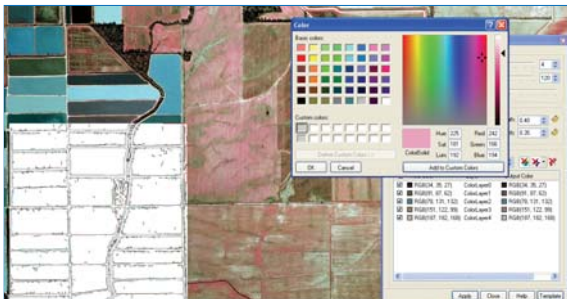
## From scanner to CAD

Large format scanners produce high-quality black and white, greyscale, or colour raster images. To effectively transfer scanned drawings to CAD, efficient post-processing software is necessary; the ideal solution is WiselImage. It has a high-end scanning module called WiseScan with native support for most wide-format scanners. It controls the scanning and automatic clean-up after scanning to optimize the raster image quality. WiselImage combines premium tools to process scanned drawings, satellite imagery, or other raster graphics for seamless and efficient CAD integration. Image cleanup, correction, calibration, bit-depth reduction and raster-to-vector conversion with WiselImage eliminates repetitive and time-consuming manual procedures.



## High precision and colour reduction

Exact calibration is essential when processing scanned drawings. WiselImage offers multiple options for selecting the most suitable method, importing coordinate values or assigning point positions manually. Transformation algorithms provide high-precision results. As large format full colour images are huge it is vital to reduce image file sizes. WiselImage has set of unique colour reduction tools. Without any loss of information, coloured areas can be combined according to colour similarities or by referring to their distribution frequencies. Using information from colours, the software can identify uniformly coloured or pattern-filled areas that can be separated to different "layers" and processed individually.



## Working with colour and grayscale raster images

In WiselImage it is possible to crop colour and greyscale raster images, change resolution and scale, deskew images, and eliminate linear and non-linear deformations using the calibration feature. It is possible to change brightness, contrast, hue and saturation and adjust the colour gamut, improve image quality and apply a set of colour filters (Blur, Unsharp mask, Median, and Gamma Correction). User can easily manage the colours of the image and create/edit

LUT files using the Colour Classifier. It is easy to draw on these images and create raster objects by rasterizing vector objects to colour raster and merge monochrome and colour raster images.

## Operations with raster objects and texts

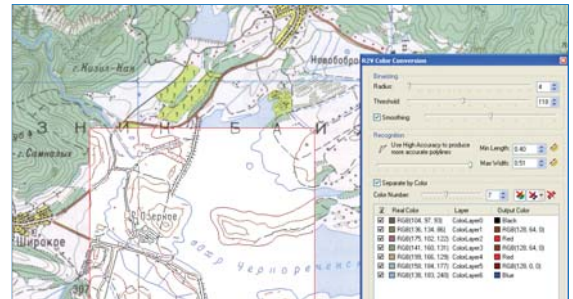
WiselImage offers several advanced options for working with raster and vector data. One of them is the unique technology to select or separate raster objects into other layers, which is based on intelligent selections and a brand new selection engine including the new smart WiseObject (text, hatches, lines) selection. WiselImage's built-in OCR feature can recognize characters and numerals within the text block that the user is going to modify. Also WiselImage allows the use of external OCR modules.

## Tracing capabilities

WiselImage has an advanced tracing function (semi-automatic, interactive raster to vector conversion) for colour, grayscale or monochrome images. In addition to simple graphic object tracing in WiselImage, it is possible to trace raster shapes that correspond to vector templates. Select a raster shape; WiselImage will match it to the appropriate vector object from the default Symbol Library or a customized library created to match user requirements. The polyline tracing feature has auto-detection of tracing direction.

## Pro' means professional

**Automatic Raster-to-vector conversion.** The advanced version of WiselImage is WiselImage Pro. It features the conversion of scanned drawings to CAD files one by one or in batch mode - even overnight. Conversion allows precise tuning to achieve the most accurate vector representation of the source files with on-the-fly preview of conversion results. The original or custom line styles, widths, text height, and hatch styles are preserved. The result of the vectorization consists of lines, polylines, arcs, circles, text, and shapes (blocks).



**Vector enhancement tools.** WiselImage Pro has a comprehensive set of tuning tools for the auto-correction of vectors obtained after raster-to-vector conversion. These include specialized functions for editing vectors, such as merging a group of vectors to the object of a given type (e.g. some segments to an arc or circle), cropping, extension, etc.

**Open architecture.** WiselImage Pro provides a revolutionary breakthrough in the ability to use the WiselImage open architecture and ActiveX technology in automation and scripting tools. The Java script and VB script editor open new horizons for advanced users. Custom scripts and procedures can be freely created and modified. Moreover, the visual HTML- form editor has been added for convenience.

Your local partner is:



Consistent Software (International) a.s.  
 Storgt. 18,  
 N-2000 Lillestrom, Norway  
 Phone: +47 6484 7110  
 Fax: +47 6484 7111  
 E-mail: sales@csoft.com  
 Internet: www.csoft.com