



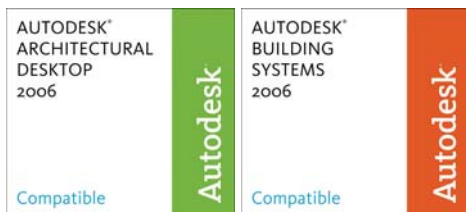
PlanTracer[®]

Compatible with ADT 2006

JUMP into 3D easily and efficiently

CONVERT 2D CAD data into 3D ADT models

RECOGNIZE user defined objects from scanned floor plans and sketches



What is PlanTracer for ADT?

PlanTracer is an application for Autodesk's Architectural Desktop[®] (ADT) and Autodesk Building Systems[®] (ABS), designed to automatically and/or semi automatically convert 2D floor plans into models. It supports new 2006 versions of Autodesk's design platforms.

PlanTracer enables conversion of sketches, raster or CAD floor plans, containing primitives – lines, circles, arcs and more into 3D ADT models with walls, columns, windows, doors, etc.

PlanTracer can process any 2D floor plan loaded in ADT[®] or ABS[®] (DWG and DXF files) and all Autodesk supported formats.

PlanTracer breathes new life into old floor plans!

Why is PlanTracer for AEC software?

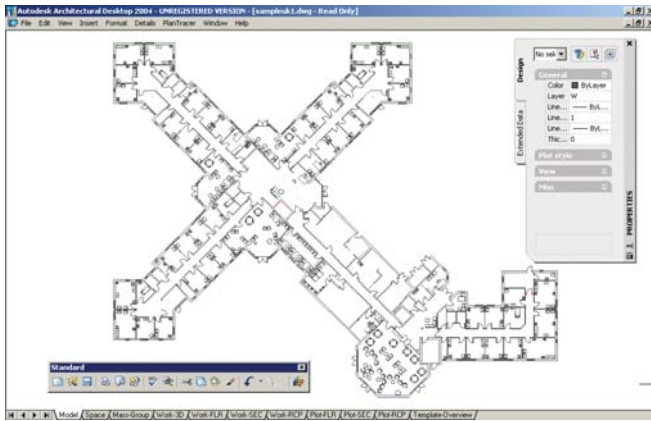
In Autodesk's Architectural Desktop[®] as in any other architectural software building blocks are not simple geometrical primitives but "construction elements" like walls, windows, doors and more.

To use old floor plans in 3D environments you now need to redraw 2D CAD files, scanned drawings or sketches manually. PlanTracer will convert such plans automatically, multiplying your efficiency in this phase. Moreover, you can create and share within company customized libraries of ADT objects and easily 'refurnish' floor plans.

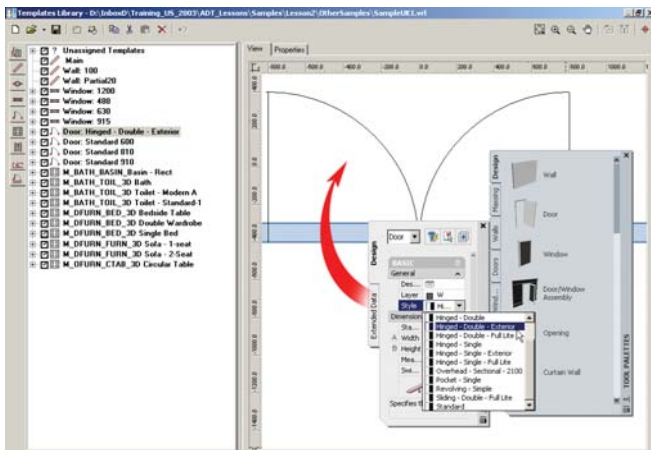
Jump into the third dimension automatically!

PlanTracer

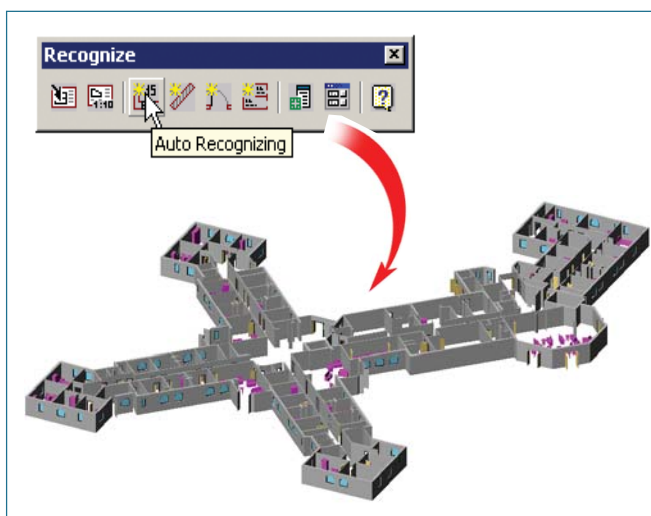
Step 1



Step 2



Step 3



PlanTracer in action

The conversion of 2D drawings into 3D models is based on the unique recognition algorithms of arbitrary objects by drawing patterns. It doesn't matter how the initial plans were created and there are no special requirements to the quality of the drawings. You need just seconds to convert a floor plan into the corresponding full-featured model:

- Step 1** Open the initial image (sketch, scanned raster file, vector file created from automatic raster to vector conversion or a drawing created in AutoCAD® or any 2D CAD system)
- Step 2** Create (open) a Template Library. This establishes the link between the ADT 'intellectual' object and one or more drawing patterns from the initial image. Once created, the Template Library can be used to process any plans containing similar objects
- Step 3** Click the "Auto Recognizing" button in the PlanTracer toolbar. Finally, use PlanTracer's interactive mode to complete recognition of inconsistencies or poor quality objects

PlanTracer creates 3D models with just one click.

PlanTracer main features

- Conversion** of 2D floor plans into intelligent 3D models in automatic and/or semi automatic modes
- Recognition** of different quality drawings by three algorithms – Sketch, Vectorized and CAD drawing
- Processing** of scanned raster drawings and sketches with an optional ImageEnabler Plug in module or with a professional hybrid graphics editing and raster to vector conversion application – WisenImage Pro (sold separately)
- Creation** of customized Template Libraries including user defined tuning of recognition parameters to match any requirements

Use PlanTracer to create reliable intelligent models.

System Requirements

Software:

- Autodesk Architectural Desktop® 3.3/2004/2005/2006 or Autodesk Building Systems® 2006
- Version of Microsoft Windows® compatible with Autodesk Architectural Desktop®

Hardware:

- Any hardware configuration suitable for Autodesk Architectural Desktop®

Architectural Desktop® and AutoCAD® are registered trademarks of Autodesk. Windows® is registered trademark of Microsoft