

# CSView CSView



[www.csoft.com](http://www.csoft.com)

Support for various file formats, from 2D CAD drawings, to raster and compressed image, to PDF and hybrid files

Extensive image, CAD, raster, vector and hybrid support

Powerful markup tools (optional)

Advanced printing parameters setup

**CSoft**  
Consistent Software

## Get the right view!

The amount of information encountered in technical environments today is enormous and typically comes from many different applications. To be able to review these data and collaborate with other users about specific details requires a robust visualization tool that handles many different file formats. CSView provides the maximum flexibility in incorporating these most varied data and can be used as a standalone application, integrated with industry standard document management systems or invoked from within any application that contains an ActiveX control.

## CSView features

### Graphical User Interface:

Users of other Consistent Software products will appreciate that CSView has an XP style GUI that they already know. The user can change the position of application windows, toolbars and menus at will. The powerful customization feature allows to add and to customize menus and toolbars. Also it is possible to associate accelerator keys with any function of CSView.

### Viewing Features:

Main function of any viewer is to show content of document as fast and precise as possible. Also it is necessary to supply user with convenient set of tools to navigate over document. With help of CSView the user can open any kind of documents and file formats, including raster images, vector CAD-files, PDF and hybrid (raster-vector) documents. Each document can be manipulated with the same set of tools. It is possible to zoom, pan over the drawing, to control display of layers in layered drawings, such as AutoCAD DWG of DXF file, etc. For better quality of colour raster images halftone display is used.

### Printing Features:

CSViewer can output viewable documents to a printer. A full print preview is available to check output settings. It is simple to select what you want to print. Results can be scaled to the desired size or automatically fit the available paper size. Moreover - all predefined printing parameters such as printing paper format and orientation, document position on printing paper, etc can be stored in printing templates and retrieved later

### Integration

CSView has COM-based architecture for optimal speed, performance, stability and security. It provides two versions - a standalone application and an embedded ActiveX-

control application. It is possible to integrate CSView control into an industry standard EDM or PDM system or into any other application which is capable to contain ActiveX control objects.

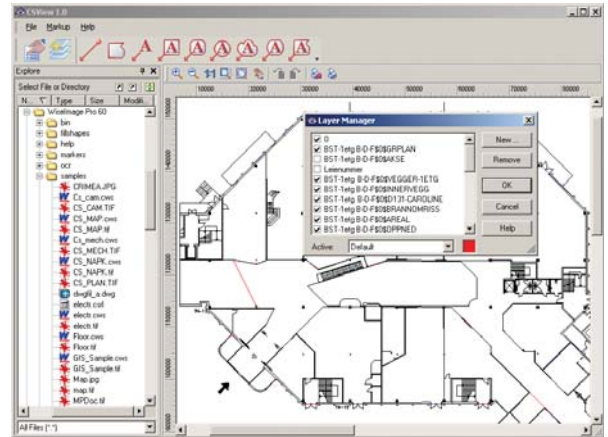
## Markup (optional)

Markups are separate files which are linked to their associated documents. They can be stored on any drive or media, making them available to other connected users. This is an invaluable asset, greatly facilitating communication and collaboration between team members. Any viewable document can be annotated to implement collaborative content creation, change requests, ECOs, and other revision functions.

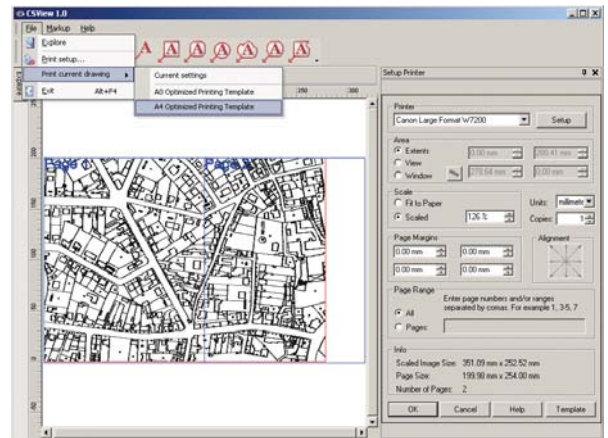
CSView markup plug-ins allow creating Rectangles, Rounded rectangles, Ovals, Lines, Polylines, Bubbles and Text as markup objects. The user can move, scale, rotate or edit any marked-up object. Also it is possible to add hyperlinks to any marked-up object. A text comment with frames and arrow pointers allows team members to share ideas and highlight problem parts in the design. Multiple colours, semi-transparent mode for backgrounds and various fill styles can be used to distinguish different markups. Furthermore, layers can be used to manage markup. Markup drawing commands utilize raster/vector snap and ortho mode to accurately draw comments.

## Supported file formats

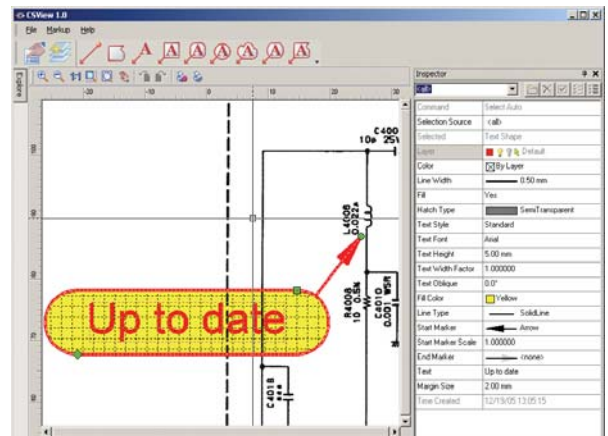
- Adobe Portable Document Format (raster only) (\*.pdf)
- AutoCAD 2000-2006 Drawing File (\*.dwg)
- AutoCAD DXF (\*.dxf)
- CALS Files (\*.cal, \*.cg4, \*.gp4, \*.mil)
- ER Mapper Compressed Wavelet (ECW) (limited edition only)
- HPGL File (\*.plt, \*.hp)
- Intergraph Raster Type 24, including multipage files (\*.cit)
- JEDMICS C4 (\*.c4, \*.ct4)
- JEDMICS T4 (\*.tg4, \*.t4)
- JPEG (Joint Photographic Experts Group) (\*.jpeg)
- JPG (\*.jpg)
- LizardTech SID File (\*.sid)
- MIL files (\*.MIL)
- Portable Network Graphics (\*.png)
- Run Length Encoded File (\*.rlc)
- RxVectory 4.x Vector Data File (\*.vc4)
- RxVectory 5.x Vector Data File (\*.vc5)
- RxSpotlight 3.x Workspace File (\*.ws)
- WisImage 5.x Document (\*.cws, \*.csrl)
- WisImage 6.x Workspace File (\*.cws)
- Tagged Image File, including multipage files (\*.tif)
- Windows Bitmap (\*.bmp)
- Windows MetaFile (\*.wmf, \*.emf)
- ZSoft PCX (\*.pcx)



Layer management



Printing template



Redlining option



Consistent Software (International) a.s.  
 Storgt. 18,  
 N-2000 Lillestrom, Norway  
 Phone: +47 6484 7110  
 Fax: +47 6484 7111  
 E-mail: sales@csoft.com  
 Internet: www.csoft.com

Your local partner is:

