



www.csoft.com

- Adobe Portable Document Format (raster only) (\*.pdf)
- AutoCAD 2000-2006 Drawing File (\*.dwg)
- AutoCAD DXF (\*.dxf)
- CALS Files (\*.cal, \*.cg4, \*.gp4, \*.mil)
- ER Mapper Compressed Wavelet (limited edit)
- HPGL File (\*.plt, \*.hp)
- Intergraph Raster Type 24 (\*.ctb)
- JEDMICS C4 (\*.c4, \*.ct4)
- JEDMICS T4 (\*.tg4, \*.t4)
- JPEG (Tagged Interchange Format) (\*.jpeg)
- JPG (\*.jpg)
- LizardTech SID File (\*.sid)
- Portable Network Graphics (\*.png)
- Run Length Encoded File (\*.rlc)
- RxVector 4.x Vector Data File (\*.vc4)
- RxVector 5.x Vector Data File (\*.vc5)
- RxSpotlight 3.? Workspace File (\*.ws)
- WiseImage 5.x Document (\*.cws, \*.cws)
- WiseImage 6.x Workspace File (\*.cw)
- Tagged Image File (\*.tif)
- Windows Bitmap (\*.bmp)
- Windows MetaFile (\*.wmf, \*.emf)
- ZSoft PCX (\*.pcx)

version 3

# CSView

Support for various file formats, from 2D CAD drawings, to raster and compressed image, to multipage and hybrid files

2 levels of functionality

Extensive image, CAD, raster, vector and hybrid support

Powerful markup tools

Advanced parametric printing setup

## Get the right view!

The amount of information encountered in technical environments today is enormous and typically comes from many different applications. To be able to review and collaborate this information with other users on specific details requires a robust visualization tool that handles many different file formats. CSView provides the maximum flexibility in re-use and collaboration of this data. CSView can be used as a standalone application, integrated with industry standard document management systems or invoked from within any application that contains an ActiveX control. CSView is supplied with 2 levels of functionality - CSView Basic and CSView.

## CSView features

### Graphical User Interface:

Users of other CSoft products will appreciate that CSView has the style GUI that they already know. The user can change the position of application windows, toolbars and menus at will. The powerful customization feature allows to add and to customize menus and toolbars. It is also possible to associate accelerator keys with any of CSView's functions.

### Viewing Features:

The main function of any viewer is to show the content of a file as fast and accurate as possible. It is also necessary to supply the user with a convenient set of tools to navigate in and between the files. With help of CSView the user can open any kind of documents and file formats, including raster images, vector CAD-files, PDF and hybrid (raster-vector) files. Every file - no matter what file format - is manipulated with the same set of tools. It is possible to zoom and pan over the drawing, to control display of layers in layered drawings, such as AutoCAD DWG or DXF file, etc. For better display quality color raster images halftone is used.

### Printing Features:

CSView can output viewable files to a printer. A full print preview is available to check the output settings. It is simple to select what and how you want to print. Results can be scaled to the desired size or automatically resized to fit the available paper size. Moreover - all predefined printing parameters such as printing paper format and orientation, document position on printing paper etc can be saved as a printing templates and reused later.



### Markup

Markups are separate files that are linked to an associated document. Markups can be stored on any drive or media, making it available to other users making it an invaluable asset that greatly facilitates communication and collaboration between team members. Any viewable document can be annotated to implement collaborative content creation, change requests, ECOs, and other revision and versioning controls.

CSView markup tool has Rectangles, Rounded rectangles, Ovals, Lines, Polylines, Bubbles and Text as markup objects. The user can move, scale, rotate or edit any marked-up object. It is also possible to add hyperlinks to any mark-up. A text comment with frames and arrow allows team members to share ideas and highlight problem parts in the design. Multiple colors, semi-transparent mode for backgrounds and different fill styles can be used to distinguish different markups. Furthermore, layers can be used to manage markup. Markup drawing commands utilize raster/vector snap and ortho mode to accurately draw comments.

### Integration

CSView has a COM-based architecture for optimal speed, performance, stability and security. It can be provided in two versions - as a standalone application or as an embedded ActiveX-control application. It is possible to integrate the CSView control directly into an industry standard EDM or PDM system or add it into any other application which is capable of containing ActiveX control objects.

### Supported file formats

- Adobe PDF (raster only) (\*.pdf)
- AutoCAD Drawing (\*.dwg)
- AutoCAD DXF (\*.dxf)
- CALS (\*.cal, \*.cg4, \*.gp4, \*.mil)
- ER Mapper (ECW) (limited edition only)
- HPGL File (\*.plt, \*.hp)
- Intergraph Raster Type 24 with multipage (\*.cit)
- JEDMICS C4, T4 (\*.c4, \*.ct4, \*.tg4, \*.t4)
- JPEG (Joint Photographic Experts Group) (\*.jpeg, \*.jpg)
- LizardTech SID File (\*.sid)
- MIL files (\*.MIL)
- Portable Network Graphics (\*.png)
- Run Length Encoded File (\*.rlc)
- RxVectory 4.x, 5.x (\*.vc4, \*.vc5)
- RxSpotlight 3.0 Workspace File (\*.ws)
- WiseImage (\*.cws, \*.csrl)
- Tagged Image File, including multipage files (\*.tif)
- Windows Bitmap (\*.bmp)
- Windows MetaFile (\*.wmf, \*.emf)
- ZSoft PCX (\*.pcx)

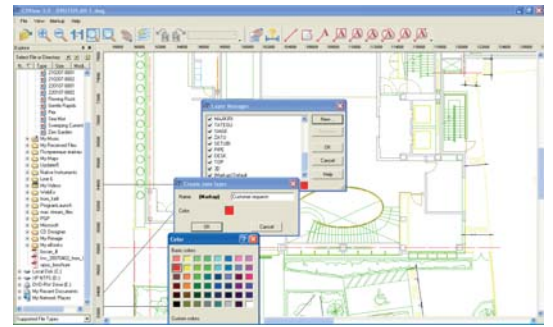
### CSView Specification

#### CSView Base:

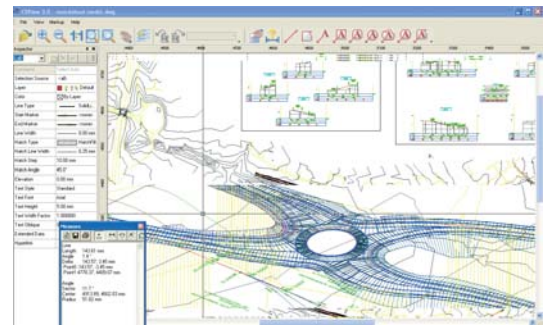
- Loading and Viewing files of various formats;
- Rotation of Scanned Images and CWS files;
- Layer management of drawing files;
- Multipage files and view layouts support;
- Document printing;
- Customizable templates for printing;
- Embedded File System browser

#### CSView is similar to Base plus:

- Markup functionality (load/create/edit/markup layers);
- Inspector (for markup objects' properties editing);
- Measure tool with units support



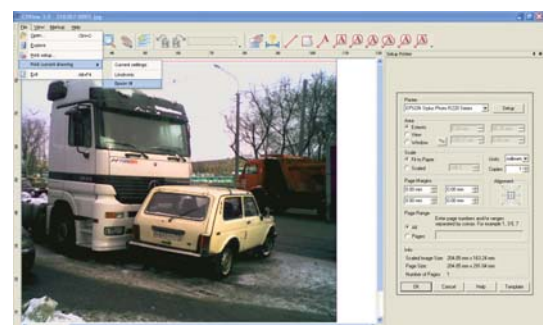
Layer Management



Measure and Inspector Tools



Markup Tool on multipage document



Printing Template

Your local partner is:



CSoft AS  
 Storgt. 18,  
 N-2000 Lillestrom, Norway  
 Phone: +47 6484 7110  
 Fax: +47 6484 7111  
 E-mail: sales@cssoft.com  
 Internet: www.cssoft.com

